

USI
USES



CALCESTRUZZO
CONCRETE



CEMENTO
CONCRETE



CEMENTO ARMATO
REINFORCED CONCRETE



CERAMICA
CERAMICS



COMPENSATO
PLYWOOD



GRANITO
GRANITE



GRES PORCELLANATO
SANDWARE



LAMINATO
LAMINATED



LEGNO
WOOD



LEGNO CON CHIODI
WOOD WITH NAILS



MALTA
MORTAR



MATERIALI E LAMIERE METALLICHE
SHEET METAL PLATES



MATTONI
BRICKS



METALLI
METALS



PIASTRELLE STANDARD
STANDARD TILES



PIETRE
STONES



PLASTICA
PLASTIC



TRUCIOLATO
CHIPBOARD



VETRORESINA
FIBERGLASS



ART. 129**FRESE PER MURO A PERCUSSIONE MECCANICA CON FILETTO A MOLLA**
*Core hammer hole saws with thread spring***INFORMAZIONI - INFORMATION**

Foratura a rotopercolazione su trapani pesanti.
Profondità di taglio: 80 mm

Rotopercolation drilling on heavy pneumatic drills
Cutting depth: 80 mm



confezione/packaging: 1 pz/pc

| Ø | altezza height | nr. denti teeth no. | CODICE CODE |
|-----|-------------------|------------------------|----------------|
| 40 | 100 | 4 | 129-40 |
| 50 | 100 | 5 | 129-50 |
| 60 | 100 | 6 | 129-60 |
| 66 | 100 | 6 | 129-66 |
| 70 | 100 | 7 | 129-70 |
| 80 | 100 | 8 | 129-80 |
| 90 | 100 | 9 | 129-90 |
| 100 | 100 | 10 | 129-100 |
| 110 | 100 | 11 | 129-110 |
| 125 | 100 | 14 | 129-125 |
| 150 | 100 | 15 | 129-150 |

ART. 129M**MANDRINI SDS-MAX PER ART. 129**
Art. 129 connecting rods with SDS-MAX shank

| lunghezza length | CODICE CODE |
|---------------------------|----------------|
| 250 con molla/with spring | 129M-1 |
| 450 con molla/with spring | 129M-2 |
| 600 con molla/with spring | 129M-3 |



confezione/packaging: 1 pz/pc

ART. 129M-4**MOLLA DI RICAMBIO**
Spare spring

| misura size | CODICE CODE |
|----------------|----------------|
| 1,8 x 20 | 129M-4 |

confezione/packaging: 1 pz/pc

ART. 129P**PUNTE PILOTA PER ART. 129M**
Art. 129M pilot drill

| Ø | lunghezza length | CODICE CODE |
|----|---------------------|----------------|
| 11 | 150 | 129P |

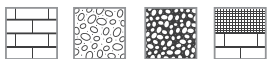


confezione/packaging: 1 pz/pc

ART. 216

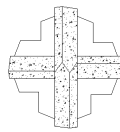
PUNTE SDS-PLUS 4 ELICHE E 4 TAGLIENTI PER MURO - SERIE "PRO"
SDS-Plus 4 flutes and 4 cutters drill bits - "PRO" series

INFORMAZIONI - INFORMATION

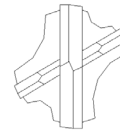


Punta con placchetta in metallo duro a 4 taglianti, 4 eliche e corpo in acciaio | Per forare a rotopercolazione

4 cutters and 4 flutes drill bit with carbide teeth and steel body | Rotopercolation drilling



diam. 5,00 ÷ 11,00 mm



diam. 12,00 ÷ 32,00 mm



confezione/ packaging: 1 pz/ pc

| Ø | lung. elica flute length | lung. totale overall length | CODICE CODE |
|-----|-----------------------------|--------------------------------|----------------|
| 5 | 45 | 110 | 216-0500110 |
| 5 | 95 | 160 | 216-0500160 |
| 5,5 | 45 | 110 | 216-0550110 |
| 5,5 | 95 | 160 | 216-0550160 |
| 6 | 45 | 110 | 216-0600110 |
| 6 | 95 | 160 | 216-0600160 |
| 6 | 140 | 210 | 216-0600210 |
| 6 | 190 | 260 | 216-0600260 |
| 6 | 240 | 310 | 216-0600310 |
| 6,5 | 95 | 160 | 216-0650160 |
| 6,5 | 140 | 210 | 216-0650210 |
| 6,5 | 190 | 260 | 216-0650260 |
| 7 | 95 | 160 | 216-0700160 |
| 8 | 45 | 110 | 216-0800110 |
| 8 | 95 | 160 | 216-0800160 |
| 8 | 140 | 210 | 216-0800210 |
| 8 | 190 | 260 | 216-0800260 |
| 8 | 240 | 310 | 216-0800310 |
| 8 | 380 | 450 | 216-0800450 |
| 9 | 95 | 160 | 216-0900160 |
| 10 | 45 | 110 | 216-1000110 |
| 10 | 95 | 160 | 216-1000160 |
| 10 | 140 | 210 | 216-1000210 |
| 10 | 190 | 260 | 216-1000260 |
| 10 | 240 | 310 | 216-1000310 |
| 10 | 380 | 450 | 216-1000450 |
| 10 | 530 | 610 | 216-1000610 |
| 10 | 930 | 1000 | 216-10001000 |
| 12 | 80 | 160 | 216-1200160 |
| 12 | 130 | 210 | 216-1200210 |
| 12 | 180 | 260 | 216-1200260 |
| 12 | 280 | 360 | 216-1800360 |

| Ø | lung. elica flute length | lung. totale overall length | CODICE CODE |
|----|-----------------------------|--------------------------------|----------------|
| 12 | 370 | 450 | 216-1200450 |
| 12 | 520 | 600 | 216-1200600 |
| 12 | 920 | 1000 | 216-12001000 |
| 14 | 80 | 160 | 216-1400160 |
| 14 | 130 | 210 | 216-1400210 |
| 14 | 180 | 260 | 216-1400260 |
| 14 | 230 | 310 | 216-1400310 |
| 14 | 370 | 450 | 216-1400450 |
| 14 | 520 | 600 | 216-1400600 |
| 14 | 920 | 1000 | 216-14001000 |
| 16 | 80 | 160 | 216-1600160 |
| 16 | 130 | 210 | 216-1600210 |
| 16 | 180 | 260 | 216-1600260 |
| 16 | 230 | 310 | 216-1600310 |
| 16 | 370 | 450 | 216-1600450 |
| 16 | 520 | 600 | 216-1600600 |
| 16 | 920 | 1000 | 216-16001000 |
| 18 | 180 | 260 | 216-1800260 |
| 18 | 230 | 310 | 216-1800310 |
| 20 | 230 | 310 | 216-2000310 |
| 20 | 370 | 450 | 216-2000450 |
| 22 | 180 | 260 | 216-2200260 |
| 22 | 370 | 450 | 216-2200450 |
| 24 | 180 | 260 | 216-2400260 |
| 24 | 370 | 450 | 216-2400450 |
| 25 | 180 | 260 | 216-2500260 |
| 25 | 370 | 450 | 216-2500450 |
| 26 | 370 | 450 | 216-2600450 |
| 28 | 370 | 450 | 216-2800450 |
| 30 | 370 | 450 | 216-3000450 |
| 32 | 370 | 450 | 216-3200450 |

ART. 247**FRESE A TAZZA CON DENTI IN METALLO DURO PER LEGNO**
*TCT woodworking hole saws for wood***INFORMAZIONI - INFORMATION**

Profondità di taglio: 65 mm
Filetto: 1/2" x 20 UNF

Cutting depth: 65 mm
Threading: 1/2" x 20 UNF



confezione/packaging: 1 pz/pc



| Ø | pollici inch | CODICE CODE |
|----|-----------------|----------------|
| 19 | 3/4" | 247-19 |
| 22 | 7/8" | 247-22 |
| 25 | 1" | 247-25 |
| 29 | 1-1/8" | 247-29 |
| 32 | 1-1/4" | 247-32 |
| 35 | 1-3/8" | 247-35 |
| 38 | 1-1/2" | 247-38 |
| 41 | 1-5/8" | 247-41 |
| 44 | 1-3/4" | 247-44 |
| 48 | 1-7/8" | 247-48 |
| 51 | 2" | 247-51 |
| 54 | 2-1/8" | 247-54 |
| 57 | 2-1/4" | 247-57 |
| 60 | 2-3/8" | 247-60 |

| Ø | pollici inch | CODICE CODE |
|-----|-----------------|----------------|
| 64 | 2-1/2" | 247-64 |
| 67 | 2-5/8" | 247-67 |
| 70 | 2-3/4" | 247-70 |
| 73 | 2-7/8" | 247-73 |
| 76 | 3" | 247-76 |
| 79 | 3-1/8" | 247-79 |
| 83 | 3-1/4" | 247-83 |
| 89 | 3-1/2" | 247-89 |
| 95 | 3-3/4" | 247-95 |
| 102 | 4" | 247-102 |
| 114 | 4-1/2" | 247-114 |
| 127 | 5" | 247-127 |
| 140 | 5-1/2" | 247-140 |
| 152 | 6" | 247-152 |

ART. 247**MANDRINI PER ART.247**
Art. 247 arbors

| per tazze for hole saws | descrizione description | CODICE CODE | informazioni information |
|----------------------------|---|----------------|--|
| 19-29 | gambo esagonale 9,52 mm 9,52 mm hexagonal shank | 247C |  |
| 32-152 | gambo esagonale 11,11 mm tipo "cambio rapido" con spine retrattili 11,11 mm hexagonal shank "quick change" with retractable drive pins | 247G |  |

confezione/packaging: 1 pz/pc

ART. 249**SEGHE A TAZZA MULTIUSO PROFESSIONALI CON DENTI IN METALLO DURO**
*Multiuse professional TCT hole saws***INFORMAZIONI - INFORMATION**

Profondità di taglio: 41 mm
 Filetto: $\varnothing 9 \div \varnothing 29 = 1/2" \times 20 \text{ UNF}$
 $\varnothing 32 \div \varnothing 108 = 5/8" \times 20 \text{ UNF}$

Cutting depth: 41 mm
 Thread: $\varnothing 9 \div \varnothing 29 = 1/2" \times 20 \text{ UNF}$
 $\varnothing 32 \div \varnothing 108 = 5/8" \times 20 \text{ UNF}$



confezione/packaging: 1 pz/pc



| \varnothing | pollici inch | CODICE CODE |
|---------------|-----------------|----------------|
| 19 | 3/4" | 249-19 |
| 22 | 7/8" | 249-22 |
| 25 | 1" | 249-25 |
| 29 | 1-1/8" | 249-29 |
| 32 | 1-1/4" | 249-32 |
| 35 | 1-3/8" | 249-35 |
| 38 | 1-1/2" | 249-38 |
| 44 | 1-3/4" | 249-44 |

| \varnothing | pollici inch | CODICE CODE |
|---------------|-----------------|----------------|
| 51 | 2" | 249-51 |
| 57 | 2-1/4" | 249-57 |
| 64 | 2-1/2" | 249-64 |
| 67 | 2-5/8" | 249-67 |
| 76 | 3" | 249-76 |
| 89 | 3-1/2" | 249-89 |
| 108 | 4-1/4" | 249-108 |

ART. 249**MANDRINI PER ART.249**
Art. 249 arbors

| per tazze for hole saws | descrizione description | CODICE CODE | informazioni information |
|----------------------------|---|----------------|--|
| 19-29 | gambo esagonale 9,52 mm 9,52 mm hexagonal shank | 249C |  |
| 32-152 | gambo esagonale 11,11 mm tipo "cambio rapido" con spine retrattili 11,11 mm hexagonal shank "quick change" with retractable drive pins | 249G |  |

confezione/packaging: 1 pz/pc

ART. 231

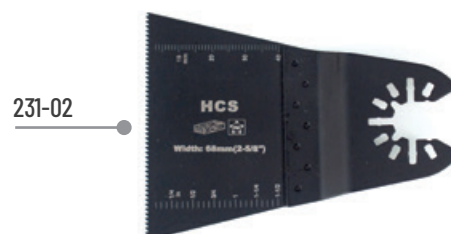
ACCESSORI HCS PER UTENSILI AD OSCILLAZIONE - ATTACCO UNIVERSALE HCS accessories for oscillating tools - Universal shank

INFORMAZIONI - INFORMATION



confezione/packaging: 1 pz/pc

| misura size | denti teeth | CODICE CODE |
|----------------|----------------------------------|----------------|
| 34x40 mm | 18 TPI | 231-01 |
| 38x40 mm | 18 TPI | 231-02 |
| 34x40 mm | 14 TPI - FAST CUT/JAPANESE TEETH | 231-03 |



ART. 235

ACCESSORI BIMETAL PER UTENSILI AD OSCILLAZIONE - ATTACCO UNIVERSALE Bimetal Accessories for oscillating tools - Universal shank

INFORMAZIONI - INFORMATION



confezione/packaging: 1 pz/pc

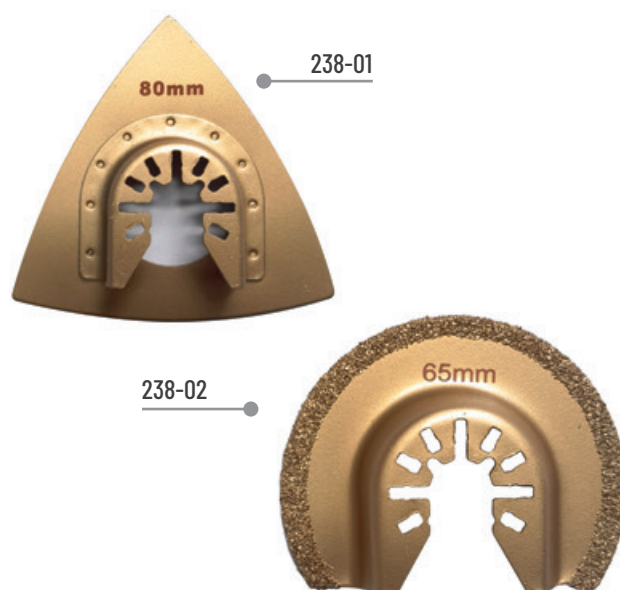
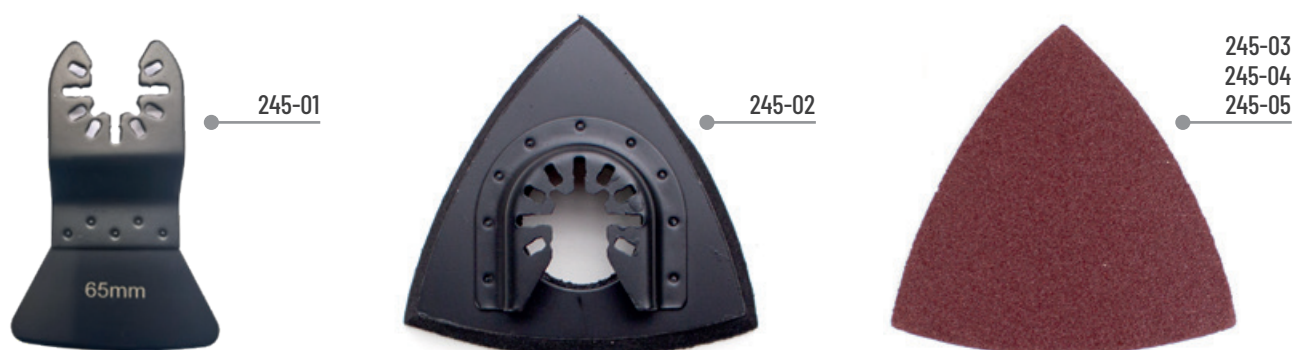
| misura size | denti teeth | CODICE CODE |
|----------------|----------------------------------|----------------|
| 34x40 mm | 14 TPI - FAST CUT/JAPANESE TEETH | 235-01 |
| 45x50 mm | 14 TPI - FAST CUT/JAPANESE TEETH | 235-02 |
| 34x40 mm | 18 TPI | 235-03 |
| 88 mm | | 235-04 |



ART. 238**ACCESSORI PER UTENSILI AD OSCILLAZIONE - ATTACCO UNIVERSALE**
*Accessories for oscillating tools - Universal shank***INFORMAZIONI - INFORMATION**

confezione/packaging: 1 pz/pc

| misura size | grana grit | CODICE CODE |
|----------------|---------------|----------------|
| 80x80x80 mm | 30-40 | 238-01 |
| 65 mm | 50-60 | 238-02 |

**ART. 245****ACCESSORI PER UTENSILI AD OSCILLAZIONE - ATTACCO UNIVERSALE**
Accessories for oscillating tools - Universal shank

| misura size | descrizione description | confezione packaging | CODICE CODE |
|----------------|---|-------------------------|----------------|
| 52mm | Rashietto HCS per intonaco, moquette <i>HCS Scraper Blade for paint/carpet</i> | 1 pz/pc | 245-01 |
| 80x80x80mm | Platorello per carte abrasive <i>Sanding delta pad</i> | 1 pz/pc | 245-02 |
| 80x80x80mm | Carta abrasiva - grana 80 <i>Sanding delta paper - grit 80</i> | 25 pz/pcs | 245-03 |
| 80x80x80mm | Carta abrasiva - grana 120 <i>Sanding delta paper - grit 120</i> | 25 pz/pcs | 245-04 |
| 80x80x80mm | Carta abrasiva - grana 240 <i>Sanding delta paper - grit 240</i> | 25 pz/pcs | 245-05 |

ART. 315 | DISCHI DIAMANTATI PER GRES PORCELLANATO, CERAMICA E PIASTRELLE - CORONA TURBO
Diamond saw blades for sandware, ceramics and tiles - Turbo tooth

INFORMAZIONI - INFORMATION



Utilizzo con o senza acqua

Use with or without water cooler



confezione/packaging: 1 pz/pc

| Ø | foro interno inside hole | CODICE CODE |
|-----|-----------------------------|----------------|
| 115 | 22 | 315-01 |

ART. 318 | DISCHI DIAMANTATI PER MATERIALI EDILI - CORONA TURBO
Diamond saw blades for building materials - turbo tooth

INFORMAZIONI - INFORMATION



Utilizzo con o senza acqua

Use with or without water cooler



confezione/packaging: 1 pz/pc

| Ø | foro interno inside hole | CODICE CODE |
|-----|-----------------------------|----------------|
| 115 | 22 | 318-01 |
| 230 | 22 | 318-02 |

ART. 319
DISCHI DIAMANTATI PER MATERIALI EDILI - CORONA CONTINUA
Diamond saw blades for building materials - continuous tooth
INFORMAZIONI - INFORMATION

Utilizzo con acqua

Use with water cooler

confezione/packaging: 1 pz/pc

| Ø | foro interno inside hole | CODICE CODE |
|-----|-----------------------------|----------------|
| 115 | 22 | 319-01 |
| 230 | 22 | 319-02 |

ART. 320
DISCHI DIAMANTATI PER MATERIALI EDILI - CORONA SEGMENTATA
Diamond saw blades for building materials - segment tooth
INFORMAZIONI - INFORMATION

Utilizzo senza acqua

Use without water cooler

confezione/packaging: 1 pz/pc

| Ø | foro interno inside hole | CODICE CODE |
|-----|-----------------------------|----------------|
| 115 | 22 | 320-01 |
| 230 | 22 | 320-02 |



F.LLI BASSOLI
di **BASSOLI GIORGIO & C. S.a.s.**
via Pilata 48
23887 OLGiate MOLGORA (LC) - ITALY

Tel. +39 039 9910421

info@bassoli.it
magazzino@bassoli.it
export@bassoli.it

www.bassoli.it